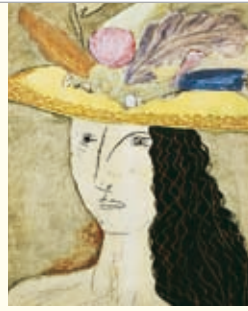




Gianni Brunelli

Azienda Agraria
Le Chiuse di Sotto



Dipinto di Richard M. Goodwin

**GIANNI BRUNELLI
BRUNELLO DI
MONTALCINO**

DENOMINAZIONE DI ORIGINE
CONTROLLATA E GARANTITA

2003

Imbottigliato all'origine dal
viticoltore Brunelli Giovanni
nell' Azienda Le Chiuse di
Sotto, 320. Montalcino, Italia

75cl e 14.5%vol.
CONTIENE SOLFITI - CONTAINS SULPHITES
L.02/07 ITALIA

Brunello di Montalcino DCG

2003

| | |
|-----------------------------|---|
| Grape variety | sangiovese 100% |
| Alcohol | 14,50% vol |
| Total acidity | 5,03 gr/l |
| Residual sugar | 1,81gr/l |
| Total polyphenol | 3505 mgr/l |
| Vineyard location | Podernovone, altitude of 350 m south-western exposure; planted in 1997 Canalicchio, altitude of 200 m south-western exposure; planted in 1989 |
| Soils | Galestro, clay loams |
| Training system | cordon trained, spur pruned |
| Number of vines per hectare | 4500 vines |
| Harvest | Hand picked, in boxes, from September 30th |
| Fermentation temperature | 33°C |
| Time of maceration | 18 days |
| Aging | 30 months in oak casks of 20 hl |
| Bottling | August 2007 |
| Production | 20000 bottles |
| Formats | 750 ml, 1,5 liter |
| Tasting notes | <i>Colour</i> deep plum-red with garnet-red reflexes, clean <i>Nose</i> Austere and wrapping with ripe fruit, very typical <i>Palate</i> dry and tannic, soft and full bodied, intense and powerful |

Loc. Podernovone, 157
I-53024 Montalcino
T +39 0577 849337
F +39 0577 846263

laura.brunelli@giannibrunelli.it
www.giannibrunelli.it
CS N 43°01'403 | EO 11°31'052